

REGULATIONS
GOVERNING THE
UNIFORM OF OFFICERS
OF THE
UNITED STATES NAVY
1883

REGULATIONS

GOVERNING THE

UNIFORM OF OFFICERS

OF THE

UNITED STATES NAVY.

NAVY DEPARTMENT.

WASHINGTON:
GOVERNMENT PRINTING OFFICE.

UNIFORM FOR OFFICERS OF THE UNITED STATES NAVY.

GENERAL REGULATIONS.

SPECIAL FULL-DRESS.—To be worn on occasions of special ceremony, and at general muster on the first Sunday of every month: Special full-dress coat, full-dress trousers, chapeau, epaulets, sword, full-dress belt, and sword-knot.

For naval cadets, the same as full dress.

For warrant officers, mates, and clerks, the same as undress.

FULL-DRESS.—To be worn on occasions of ceremony, as in making the first visit, in each port, to officers of flag-rank, and on social occasions to which officers are invited in their official capacity and at which evening dress would be expected: Full-dress coat, full-dress trousers, full-dress waistcoat, chapeau, epaulets, sword, full-dress belt, and sword-knot; the sword-belt under the waistcoat.

For naval cadets, cap and shoulder-knots in lieu of chapeau and epaulets.

For warrant officers, mates, and clerks, the same as undress.

Social full-dress.—On occasions of a strictly social nature, commanding officers will permit the wearing of full-dress, without chapeau, epaulets, or shoulder-knots, sword, belt, or sword-knot, and with plain blue trousers.

DRESS.—To be worn on all occasions of ordinary ceremony, in boarding ships-of-war, in making the first visit in port to commanding officers, on parades of ceremony with enlisted men under arms, and at Sunday inspection, except on the first Sunday in the month: Frock coat; blue or white trousers, and chapeau or helmet, as ordered by the senior officer present; epaulets, sword, belt, and sword-knot; the coat to be worn completely buttoned, and the sword-belt over the coat.

For naval cadets, cap and shoulder-knots in lieu of chapeau and epaulets.

For warrant officers, mates, and clerks, the same as undress.

Undress.—To be worn when reporting for duty, when serving on courts or boards, except boards of survey, and when calling officially on foreign officers other than commanding officers: Frock coat; white or blue trousers, and cap or helmet, as ordered by the senior officer present; shoulder-straps (for commissioned officers), sword and belt; the coat to be worn completely buttoned, and the sword-belt over the coat.

With undress the shoulder-knots shall not be worn by naval cadets.

SERVICE-DRESS.—To be worn at all times not already provided for: Blue or white service-coat, blue or white trousers, blue cap or helmet, as ordered by the senior officer present. The service sword-belt is to be worn, with sword attached, on all duty with enlisted men under arms or when away from the ship on service. The sword is to be at hand when on watch. When on duty with the Naval Brigade or landing party, leggings shall be worn, and such arms, equipments, and extra clothing as the nature of the service may require.

A binocular, or spy-glass, shall be carried by the officer of the deck in port.

A deck trumpet shall be carried by the officer of the deck at sea.

The senior officer present shall, by general notice, permit officers to wear plain clothes when away from the ship or shore station, unless the condition of affairs on shore or other special circumstances render it advisable to withhold the permission.

Officers are forbidden to wear any part of the naval uniform with plain clothes, except the helmet with naval buttons removed, and the overcoat.

Immediately after a vessel is commissioned, and before proceeding to sea, the commanding officer shall ascertain and report to the Department whether any officer under his command is unprovided with his complete naval uniform and equipments.

In cold weather overcoats shall be worn, when directed by the senior officer present, over any of the foregoing uniforms. When overcoats are worn, epaulets shall be dispensed with.

In foul weather, except under special circumstances, officers shall be permitted to wear rain clothes.

Officers on furlough for punishment shall not wear the naval uniform.

White gloves shall always be worn with the sword, except at sea.

In the order fixing the uniform of the day, trousers of the same color shall be prescribed for officers and men, except in those cases when, the crew being in white overalls, white trousers might be inappropriate for officers.

In orders prescribing the uniform to be worn, the designations *special full-dress*, *full-dress*, *social full-dress*, *dress*, *undress*, and *service-dress*, shall be used without qualifying words. If white service-coats, white trousers, or helmets are to be worn, the fact shall be stated; otherwise it will be understood that the dress is to be all blue.

Retired officers will be permitted to wear the uniform of their grade as prescribed at the time of their retirement.

SPECIAL REGULATIONS.

SPECIAL FULL-DRESS COAT.

The special full-dress coat for the Admiral, the Vice-Admiral, rear-admirals, commodores, captains, commanders, lieutenant-commanders, lieutenants, and ensigns, shall be of dark navy-blue cloth, double-breasted, lined with white silk serge; the waist of the coat to descend to the top of the hip-bone; the skirts to begin about one-fourth of the circumference from the front edge and descend four-fifths of the distance from the hip-bone to the knee, with two buttons on the waist behind and one near the bottom of each fold; two rows of large navy buttons on the breast, nine in each row; the rows placed four and a half to five and a half inches apart from eye to eye at top, and two and a half inches at bottom; the cuffs of the coat to be closed, without buttons, and to be from two and a half to three inches deep; standing collar to hook in front at bottom, and to slope thence upward and backward at an angle of twenty-five degrees on each side, and to rise no higher than will permit a free movement of the chin over it; the collar to have one strip of gold embroidered white-oak leaves (as per pattern) for the Admiral and Vice-Admiral, and a strip of navy gold lace one inch wide around the top and down the front, for rear-admirals, commodores, captains, and commanders; one-half inch wide for lieutenant-commanders, lieutenants, and ensigns.

Rear-admirals who are provided at the date of the issue of these regulations with coat collars and sword-belts embroidered with white-oak leaves will be allowed to continue to wear them.

All staff officers shall wear the same coat, and the same width of gold lace as prescribed for line officers with whom they have relative rank.

FULL-DRESS COAT.

For all officers, except warrant-officers, mates, and clerks, the full-dress coat shall be a body coat of dark navy-blue cloth, faced with the same, lined with black silk serge, double-breasted, cut to the figure, with rolling collar; five large navy buttons on each breast, two at the waist behind, and one near the bottom of each fold; closed cuff without buttons. Shoulder attachments for epaulets to be of cloth and silk neatly laid on. The full-dress coat shall always be worn open.

FROCK COAT.

For all officers the frock coat shall be of dark navy-blue cloth, faced with the same and lined with black silk serge, double-breasted, made to button to the neck, with two rows of large navy buttons on the breast, nine in each row; the rows placed four and a half to five and a half inches apart from eye to eye at top, and two and a half inches at bottom;

rolling collar; skirts to be full, beginning at the hip-bone and descending four-fifths of the distance, thence to the knee, with two buttons at the waist behind and one near the bottom of each fold; cuffs to be closed, without buttons, and from two and a half to three inches deep. Shoulder attachments for epaulets to be of cloth and silk neatly laid on. A metallic hook, covered with cloth, whose length shall be equal to the width of the sword-belt, shall be placed in the seam over the left hip to support the weight of the sword.

SERVICE COAT.

For all officers, a coat of dark navy-blue cloth, shaped to the figure, to fall as low as the upper joint of the thumb when the arm is hanging naturally by the side; a slit over each hip extending on the right side five inches from the bottom of the coat, and on the left side as high as the position of the lower edge of the sword-belt; single-breasted, with a "fly" front fitted with plain, flat, black gutta-percha buttons and a standing collar. The collar, edges of the coat, side seams of the back from the shoulder to the lower edge of the skirt, and edges of the hip slits to five inches from bottom of coat shall be trimmed with lustrous black braid one inch and a quarter wide, laid on flat, beside which, at a distance of one-eighth of an inch, with an overhand turn three-eighths of an inch in diameter at each change of direction, a narrow black silk braid one-eighth of an inch wide shall be placed. On each side of the collar shall be embroidered in high relief, one inch in width, the corps badge and grade devices. The grade mark on the sleeve shall be a double thickness of lustrous black braid, showing the same width and disposition as that of gold lace worn on the other coats. The corps distinction on the sleeve shall be omitted.

In warm weather, a similar coat made of white linen duck, trimmed with white braid, but without collar devices, shall be worn.

The service coat shall be worn entirely buttoned.

TROUSERS.

Full-dress.—For all commissioned officers, trousers shall be of dark navy-blue cloth, having a strip of gold-lace down their outer seam of the same width as that prescribed for the collar of the special full-dress coat.

For naval cadets, the lace shall be one-quarter of an inch wide.

Undress and service dress.—For all officers, trousers shall be of dark navy-blue cloth or white linen duck.

During hot weather dark navy-blue flannel trousers will be permitted in service dress.

WAISTCOAT.

Full-dress.—For all commissioned officers and naval cadets, the waistcoat shall be of dark navy-blue cloth, single-breasted, rolling-collar, cut to open low in front, with four small navy buttons.

Undress.—For all officers, the waistcoat shall be of dark navy-blue cloth, or white linen duck, single-breasted, without collar, cut high in front, with seven small navy buttons, the upper one to be not more than four inches below the collar-button in the neck-band of the shirt.

OVERCOAT.

For all officers, the overcoat shall be an ulster, of dark navy-blue cloth (smooth-faced), lined with dark blue cloth or flannel, the bottom of the skirt nine to twelve inches from the ground, double-breasted, made to button to the neck, with rolling collar of the same material as the coat, and broad enough to protect the ears when turned up; seven plain, flat, black gutta-percha buttons on each front, one and one-quarter inches in diameter, the lower buttons to be placed as low as the knee, the others to be equally spaced up to the throat; an outside pocket in each breast, the openings to be up and down, and the lower part of the opening to be level with the elbow; an up-and-down slit over the left hip large enough to admit the sword-hilt. A belt two and three-quarter inches wide, of the same material as the coat, to be worn through loops placed above each hip, and to be fastened in front with button similar to those on the coat. No collar devices; sleeve grade marks the same as prescribed for the service coat.

A hood of the same material as the coat, made to button around the neck under the collar, and large enough to cover the head and cap, shall be worn at night, or in foul weather, when authorized by the senior officer present.

The overcoat shall be worn entirely buttoned.

CRAVAT.

The cravat for all officers shall be of black ribbed silk, not more than thirty-six nor less than thirty-two inches long, and not more than one inch and a quarter or less than three-quarters of an inch wide, tied in a double bow-knot in front, with a white shirt-collar showing above it.

COLLAR.

The shirt-collar shall always be white; and a standing-collar shall be worn with the special full-dress coat and the service-coat.

BOOTS OR SHOES,

Shall be of black calf-skin or patent leather. At social entertainments low shoes and black socks will be permitted.

In warm weather, low shoes with white or black socks may be worn, in undress and service dress.

GLOVES,

Shall be of white lisle thread, except for open air service in cold weather, when white leather or heavy white cotton shall be worn.

LEGGINGS.

Unbleached No. 9 flax duck leggings with eight plain, flat, white bone buttons, about half an inch in diameter, shall be worn by all officers serving with an armed landing party.

SLEEVE ORNAMENTS.

On special full-dress coats of admirals.

For the Admiral, three strips of gold-embroidered white-oak leaves, the strips one inch wide and a half an inch apart.

For the Vice-Admiral, two strips of oak-leaves, similarly placed.

For rear-admirals, one strip of two-inch gold lace, one inch and one-half from the edge of the sleeve, with one strip of half-inch gold lace one-quarter of an inch above it.

On full-dress and frock coats of admirals.

For the Admiral, one strip of two-inch gold lace, with three strips of half-inch gold lace, one-quarter of an inch apart, above; or, the Admiral may, at his discretion, wear the full and undress uniform as established by regulation of December 1, 1866.

For the Vice-Admiral, one strip of two-inch gold lace, with two strips of half-inch lace above.

For rear-admirals, one strip of two-inch gold lace, with one strip of half-inch lace above.

Special full-dress, full-dress and frock coats of other officers.

Commodores, one strip of two-inch gold lace.

Captains, four strips of half-inch gold lace set one-quarter of an inch apart.

Commanders, three strips one-half inch gold lace, set one-quarter of an inch apart.

Lieutenant-commanders, two strips of half-inch gold lace with one strip of one-quarter inch gold lace between, each a quarter of an inch apart.

Lieutenants, two strips of half-inch gold lace, one-quarter of an inch apart.

Lieutenants (junior grade), one strip of half-inch gold lace, with one strip of quarter-inch gold lace one-quarter of an inch above it.

Ensigns, one strip of half-inch gold lace.

Ensigns (junior grade), one strip of quarter-inch gold lace.

Naval cadets who have completed the four years' course at the Naval Academy, one strip of quarter-inch gold lace to be wound with dark blue silk at intervals of two inches, the width of the silk wrapping to be one-half inch.

In the case of officers below the grade of rear-admiral the lower edge of the sleeve lace shall be two inches from the edge of the sleeve.

All staff officers shall wear the same lace on the cuff as is prescribed for line officers with whom they have relative rank, with bands of colored cloth around the sleeve, between the strips of gold lace, as follows:

Medical officers, dark maroon velvet.

Pay officers, white cloth.

Engineer officers, red cloth.

Naval constructors, dark violet cloth.

Professors of mathematics, olive green cloth.

Civil engineers, light blue velvet.

Staff officers entitled to but one strip of lace on the sleeve will wear the colored cloth so as to show one-fourth of an inch above and below the strip.

Line officers (including mates, boatswains, and gunners) will wear a star of five rays, embroidered in gold, one inch in diameter, on the outer side of each sleeve, and midway between the seams, with one of the rays pointing directly downwards, and the point one-fourth of an inch from the upper edge of the upper strip of lace.

Mates, boatswains, and gunners will wear the star four inches from the edge of the sleeve.

EPAULETS AND SHOULDER KNOTS.

All commissioned officers shall wear two gold-bullion epaulets of the following dimensions:

For the Admiral, Vice-Admiral, rear-admirals, and commodores: the strap to be two and three-quarters of an inch wide and six inches long; frog four and three-eighths of an inch wide; crescent eleven-sixteenths of an inch in the broadest part; bullion three and one-half inches long, and five-eighths of an inch in diameter.

For captains and commanders: the strap to be two and three-quarters of an inch wide and six inches long; frog four and three-eighths of an inch wide; crescent eleven-sixteenths of an inch in the broadest part; bullion three inches long and half an inch in diameter.

For lieutenant-commanders, lieutenants, and ensigns: the strap to be two and one-half inches wide and six inches long; frog four and three-eighths of an inch wide; crescent nine-sixteenths of an inch in broadest part; bullion three inches long and three-eighths of an inch in diameter.

For naval cadets who have completed the four-years' course at the Naval Academy, gold embroidered shoulder-knots in lieu of epaulets.

All staff officers shall wear the same epaulets as are prescribed for line officers with whom they have relative rank, with the substitution of the proper corps devices.

SHOULDER-STRAPS.

For all commissioned officers the shoulder-strap shall be four inches and a quarter long and one inch and a half wide, including the border,

which is to be a quarter of an inch wide, embroidered in dead gold. The center to be of dark navy blue cloth upon which are to be embroidered the corps and rank devices, as follows:

(NOTE.—The shoulder-straps for the Admiral of the Navy shall be four and seven-eighths inches long and one and five-eighths of an inch wide, including the border, which is to be one-quarter of an inch wide.)

EMBROIDERED DEVICES FOR FROGS OF EPAULETS AND FOR SHOULDER-STRAPS AND KNOTS.

For the Admiral, four silver stars of five rays each, placed at equal distances, with a gold foul anchor one and one-eighth of an inch long under each of the outer stars.

For the Vice-Admiral, three similar stars, placed at equal distances, with a gold foul anchor one and one-eighth of an inch long under the central star.

For rear-admirals, two similar stars, one near each end of the frog, with a silver foul anchor seven-eighths of an inch long in the center.

For commodores, one similar star, placed in the center, with a silver foul anchor at each end of the frog.

For captains, a silver spread-eagle in the center, with a silver foul anchor at each end.

For commanders, a silver oak leaf at each end, with a silver foul anchor in the center.

For lieutenant-commanders, a gold oak leaf at each end, with a silver foul anchor in the center.

For lieutenants, two silver bars at each end, with a silver foul anchor in the center.

For lieutenants, junior grade, one silver bar at each end, with a silver foul anchor in the center.

For ensigns, a silver foul anchor in the center.

For ensigns, junior grade, a silver anchor, plain, without cable, in the center.

For naval cadets who have completed the four years' course at the Naval Academy, a gold foul anchor in the center of the pad of the shoulder-knot.

Staff officers shall wear on the frog of the epaulet and in the center of shoulder-strap the same rank devices as are prescribed for line officers with whom they have relative rank, substituting the proper corps device for the foul anchor.

CORPS DEVICES.

For the Medical Corps, a spread oak leaf embroidered in dead gold, with an acorn embroidered in silver upon it.

For the Pay Corps, a silver oak sprig.

For the Engineer Corps, four silver oak leaves.

For the Construction Corps, a gold sprig of two live-oak leaves and an acorn.

For Chaplains, a silver Latin cross.

For Professors, one silver oak leaf and an acorn.

For Civil Engineers, the letters **C E** in silver.

For Secretaries, the letter **S** in silver.

EMBROIDERED COLLAR DEVICES FOR FROCK COATS OF WARRANT OFFICERS.

Boatswains, after twenty years' service as such, two foul anchors, crossed, embroidered in silver. Boatswains, under twenty years' service as such, two foul anchors, crossed, embroidered in gold.

Gunners, after twenty years' service as such, a flaming spherical shell, embroidered in silver. Gunners, under twenty years' service as such, a flaming spherical shell, embroidered in gold.

Carpenters, after twenty years' service as such, a chevron, point down, embroidered in silver. Carpenters, under twenty years' service as such, a chevron, point down, embroidered in gold.

Sailmakers, after twenty years' service as such, a diamond, embroidered in silver. Sailmakers, under twenty years' service as such, a diamond, embroidered in gold.

Mates, after twenty years' service as such, a binocular glass, with the axes at right angles to the edge of the collar, eye-pieces up, embroidered in silver. Mates, under twenty years' service as such, a binocular glass placed as above, embroidered in gold.

Pay clerks, the corps device of the Pay Corps, embroidered in gold.

EMBROIDERED COLLAR DEVICES FOR SERVICE COATS.

Collar devices shall be embroidered in high relief upon each side of the collar of the service coat. They shall be one inch in height, with other dimensions proportionate, and shall be placed vertically or horizontally with reference to the upper edge of the collar.

The rank device shall commence three-quarters of an inch from the front edge of the collar. The corps device shall be placed three-quarters of an inch in rear of the rear edge of the rank device.

For flag officers the stars shall be placed one inch and a quarter between centers with one point up, the center line of the upper point being at right angles to the upper edge of the collar.

Where two bars are worn the distance between them shall be the width of a bar. The bar shall always be placed at right angles to the upper edge of the collar.

The anchor shall be placed with the shank parallel to the upper edge of the collar, and the crown to the front. Devices representing a leaf or a sprig of leaves shall be placed with the axes parallel to the upper edge of the collar, stem to the front, and acorn, if any, on the upper side.

Devices shall be as follows:

For the Admiral, four silver stars and a silver foul anchor.

For the Vice-Admiral, three silver stars and a silver foul anchor.

For rear-admirals, two silver stars and a silver foul anchor.

For commodores, one silver star and a silver foul anchor.

For captains, a silver spread-eagle and a silver foul anchor.

For commanders, a silver oak leaf and a silver foul anchor.

For lieutenant-commanders, a gold oak leaf and a silver foul anchor.

For lieutenants, two silver bars and a silver foul anchor.

For lieutenants, junior grade, one silver bar and a silver foul anchor.

For ensigns, a silver foul anchor.

For ensigns, junior grade, a silver clear anchor.

For naval cadets who have completed the four years' course at the Naval Academy, a gold foul anchor.

Staff officers shall wear the same rank devices as are prescribed for line officers with whom they have relative rank, substituting the proper corps devices for the anchor.

Warrant officers, mates, and pay clerks shall wear the same devices on the collar of their service coat as are prescribed for the frock coat

CHAPEAU.

All commissioned officers shall wear a rigid chapeau, made of black-silk beaver, of the following dimensions: Five and a half inches high on the left fan, four and a half inches high on the right fan, and between sixteen and eighteen inches long from peak to peak.

For the Admiral, Vice-Admiral, rear-admirals, and commodores, a strip of one-and-one-half-inch gold lace, to be laid on flat, around the outer rims of the fans, passing under the peaks.

For all other officers a strip of black-silk lace two and a half inches wide, binding the rims of the fans, and showing one and a quarter inches on each side and under the peaks.

In the fold at each end of the hat a tassel shall be placed, formed of five gold bullions, underlaid by five blue bullions, and on the right fan a black-silk cockade three and three-quarter inches in diameter.

All officers shall wear over the cockade a loop formed of two parts of gold lace of the width prescribed to be worn on the collar of the special full-dress coat of the wearer. Above the V formed at the lower end of the loop by folding over the lace, a large-sized navy button shall be fastened. The point of the loop shall touch the middle of the lower rim of the fan, and the loop shall slope upwards and forwards at an angle of 35° from the vertical, the ends being carried over the rim of the fan.

CAP.

The cap for all officers shall be of dark navy-blue cloth, the diameter at the top to be slightly less than at the base, the quarters not less than one inch and a quarter, or more than one and a half inches high, and of the same height in front and at the back. The seam around the top

shall be made without a welt, and neatly stitched on each side. The band shall be one and a half inches wide with a welt one-eighth of an inch in diameter at the top and bottom. The bottom welt shall be one-eighth of an inch from the base of the cap. A band of lustrous black mohair braid, similar to that used for the trimmings of the service coat, shall be worn between the upper and lower welts. The visor for all officers shall be of black patent leather bound with the same. All visors shall be green underneath, rounded and sloping downwards not less than 20° or more than 30° from the horizontal. The inside band shall be of leather, and shall extend from the base of the cap to within one inch of the top. The sweat lining shall be of morocco. Four black metal eyelets, two on each side, shall be placed above the band in the quarters for ventilation. A small-sized navy button shall be placed on each side beyond the ends of the visor, the eye of the button immediately above the lower welt. For all commissioned officers, a sliding chin-strap of leather, faced with half-inch gold lace, with two gold lace slides of the same width, shall be fastened over the buttons; for all other officers a similar chin-strap one-quarter of an inch in width. When not used under the chin the strap will be drawn between the buttons, resting on the upper edge of the visor.

CAP ORNAMENTS.

The ornament shall be embroidered on the front of the cap, with its center over the upper welt.

For all commissioned officers and naval cadets who have completed the four years' course at the Naval Academy, the device shall be a silver shield, emblazoned paleways, of thirteen pieces, with a chief strewn with stars surmounted by a silver spread-eagle, the whole being placed upon two crossed fowl anchors embroidered in gold.

For warrant officers, mates, and pay clerks, two gold fowl anchors crossed.

HELMET.

The helmet shall be made of cork or other suitable material, the crown to measure (in the curve), from the lower edge of the outside band below the strap buttons, to the center of the ventilator on top of the crown, not less than six or more than six and three-quarter inches. The brim at the front shall not be less than two and one-quarter or more than two and one-half inches wide, and shall diminish in width to one inch on each side at the middle of the crown; the brim at the back shall be three-eighths of an inch wider than that in front, and diminish to the same width on the sides as the front brim; the droop of the brim at the front shall be not less than 48° or more than 50°; back not less than 45° or more than 48°; sides not less than 55°. The covering of the helmet shall be light-drab linen duck, with a band at the base of the crown of the same material, three-quarters of an inch wide and stitched on each edge; one small navy button, detachable, in the band on each side at the

middle, and a light-drab glazed leather chin-strap in front, five-eighths an inch wide; the sweat-band of uncolored morocco, with a ventilating space between it and the body of the crown; the brim lined with green alpaca or silk, bound with light-drab enameled leather, and the crown lined with suitable light material, as per pattern.

SWORD.

The sword for all officers shall be a cut-and-thrust blade, not less than twenty-six or more than thirty-two inches long; half-basket hilt; grip white; scabbards of black leather; mountings of yellow gilt; and all as per pattern.

SWORD-BELT.

Full-dress.

For the Admiral and Vice-Admiral the belt shall be of dark navy-blue cloth, with a gold-embroidered stripe one-quarter of an inch wide on each edge, and one strip of gold-embroidered white-oak leaves, one-half inch wide, running through the center, as per pattern. The sling-straps shall be of blue cloth with a gold-embroidered stripe one-eighth of an inch wide on each edge, as per pattern.

For rear-admirals and commodores, the belt shall be of dark navy-blue cloth, with gold-embroidered stripe one-quarter of an inch wide, on each edge, and one of the same width in the center. The sling-straps shall be of dark navy-blue cloth with three gold-embroidered stripes one-eighth of an inch wide, arranged as on the belt.

For captains and commanders, the belt shall be of dark navy-blue silk webbing, with seven one-sixteenth-inch gold-lace stripes woven as per pattern.

For lieutenant-commanders and lieutenants, the belt shall be of dark navy-blue silk webbing, with five one-sixteenth-inch gold lace stripes woven as per pattern.

For lieutenants (junior grade) and ensigns, the belt shall be of dark navy-blue silk webbing, with three one-sixteenth-inch gold lace stripes woven as per pattern.

For naval cadets, warrant officers, mates, and clerks, same as dress.

The sling-straps for captains, commanders, lieutenant-commanders, lieutenants, and ensigns as per pattern.

Staff officers shall wear the same belt and slings as are prescribed for line officers with whom they have relative rank.

Dress, undress, and service dress.

For all officers, the belt shall be of plain black grained leather, not less than an inch and a half nor more than two inches wide, with sling-straps of the same not less than one-half nor more than three-quarters of an inch wide, and with a hook in the forward ring to suspend the sword. The belt-plate shall be of yellow gilt in front, two inches in diameter.

The sword belt shall be worn over the special full-dress and frock coats, with the lower edge of the belt placed above the two lower buttons in front and the two at the waist behind. The short-sling clasp shall be immediately in rear of the left hip-bone; the long-sling clasp exactly in the center of the back between the buttons.

With the full-dress and service coats and the overcoat, the belt is to be worn underneath.

When an officer is in uniform, the sword shall always be carried attached to the slings, and with the belt properly adjusted on the body.

When the sword is hooked up it shall be with a half turn, so that the hilt shall be to the rear of the hook; the back of the blade turned to the front, sling straps outside.

SWORD-KNOT.

For all officers, except boatswains, gunners, carpenters, sailmakers, mates, and clerks, the sword-knot shall be a strap of half-inch gold lace twenty-four inches long, including the tassel, with a gold slide, tassel of twelve gold bullions, one inch and three-quarters long, including five blue bullions, and with basket-worked head.

BUTTONS,

Shall be gilt, convex, and of two sizes in exterior diameter; large, seven-eighths of an inch; and small, nine-sixteenths of an inch. The device shall conform to pattern.

In place of the prescribed uniform, chaplains may wear the single-breasted coat, waistcoat, and trousers commonly worn by clergymen, made of black or dark navy-blue cloth.

On all occasions of mourning officers shall wear a strip of black cloth three inches wide around the left arm above the elbow.

Commanding officers will be careful to observe and enforce these regulations.

Executive, watch, and division officers shall be held responsible for the inspection of the uniform, arms, and equipments of all their subordinates.

These regulations shall go into operation January 1, 1884. Until July 1, 1884, officers will be permitted to wear articles of dress prescribed by former regulations. After that date, the new regulations will be strictly enforced.

WM. E. CHANDLER,
Secretary.

NAVY DEPARTMENT,
November 1, 1883.

FULL DRESS SWORD BELT ADMIRAL & VICE-ADMIRAL.



Sword Belt.

PLATE I.

REAR ADMIRAL & COMMODORE.
of Blue Cloth & Gold Embroidery

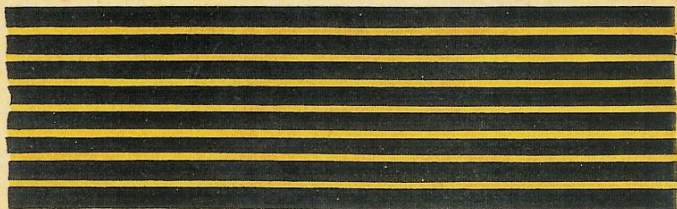


Not less than one inch and a half
nor more than two inches wide.

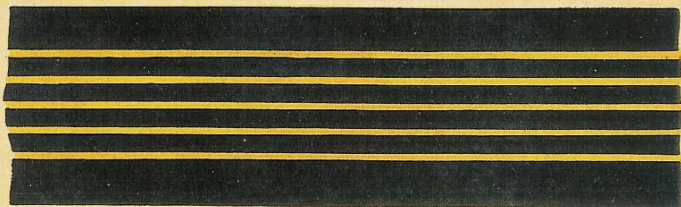


PLATE II.

CAPTAIN & COMMANDER.



LIEUT. COMMANDERS, AND LIEUTENANTS.



LIEUTENANTS (*Junior Grade*) AND ENSIGNS.

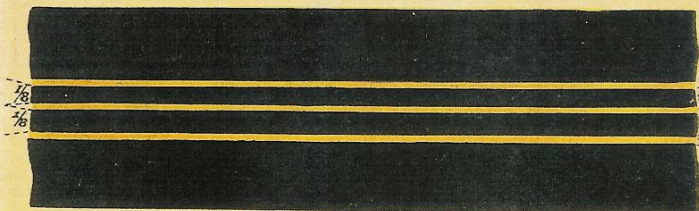
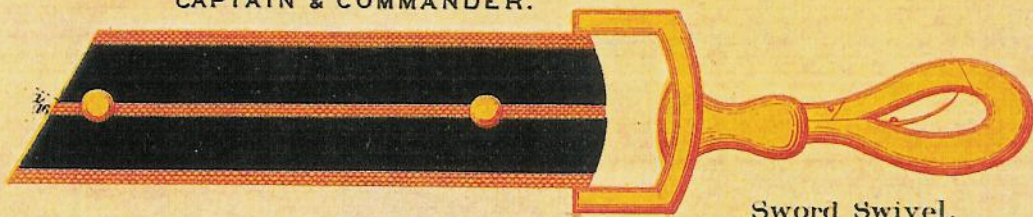


PLATE III.

SWORD SLINGS FOR THE BELTS OF

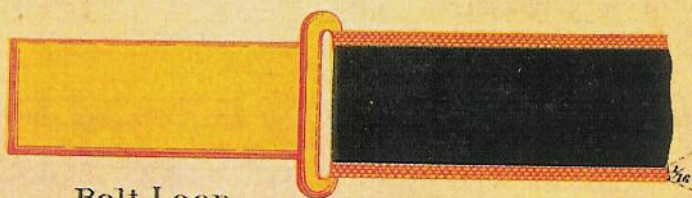
Dark Blue Silk & Gold Webbing.

CAPTAIN & COMMANDER.



Sword Swivel.

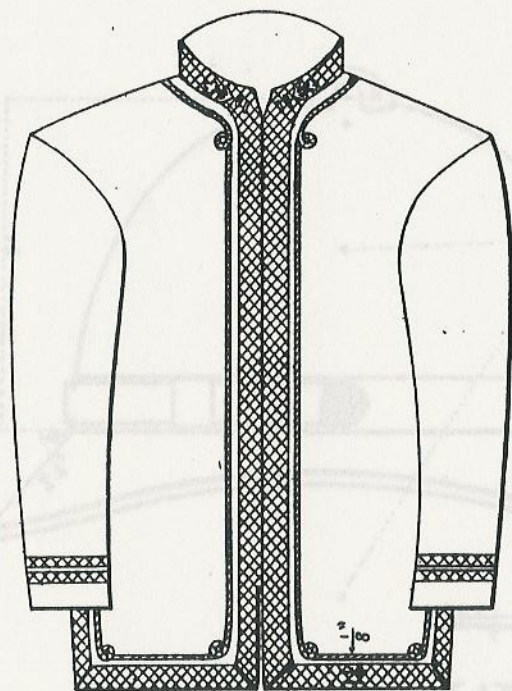
LIEUT. COMMANDERS, AND LIEUTENANTS.



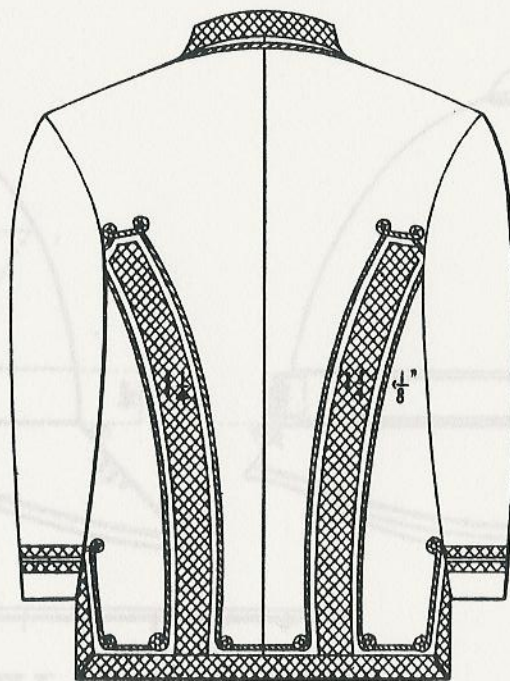
Belt Loop.

LIEUTENANTS (*Junior Grade*) AND ENSIGNS.

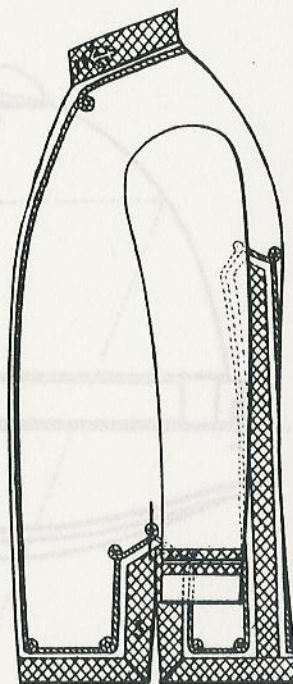




FRONT



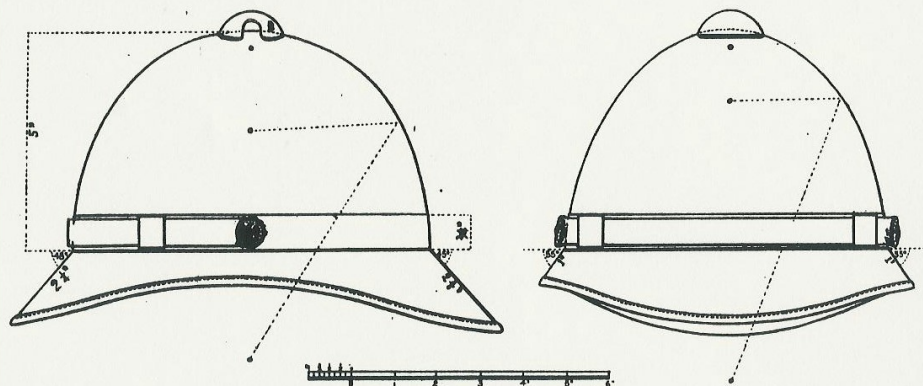
BACK



SIDE

U.S. NAVY SERVICE-COAT

The shaded parts represent the braids



NAVY HELMET